

**Laborfittings LHP – Laboratory fittings LHP – Raccords de laboratoire LHP**

Werkstoffe: 1.4571 / 1.4435 Materials: AISI 316Ti/316L

2000 bar 29 000 PSI

**Vorteile und Eigenschaften**

- Fitting-Körper aus kaltverfestigtem, austenitischem, rostfreiem Stahl W.-Nr. 1.4571 und 1.4435 für grösste Korrosionsbeständigkeit und Verschleissfestigkeit im Dichtkonus.
- Gas- und flüssigkeitsdicht unter extremen Bedingungen.
- HD-Kapillarrohr AØ 1/8" (3.2 mm) oder AØ 1/16" (1.6 mm).
- Hochdruckrohranschlüsse mittels Klemmringsen.
- Alle Fittings mit Druckschrauben und Klemmringsen.
- Entlastungsbohrungen an den Rohranschlüssen.

**Optionen**

- Fittings mit mediumberührten Teilen in korrosionsbeständigen Werkstoffen wie Hastelloy, Titan usw.
- Befestigungsbohrungen im Körper.
- Werkstoffzeugnisse auf Anfrage.



**Avantages et caractéristiques**

- Corps en acier inoxydable austénitique écroui 1.4571 et 1.4435 assure une résistance optimale à la corrosion et à l'usure dans les cônes.
- Pour liquides et gaz à conditions de service extrêmes.
- Tubes capillaires Ø ext. 1/8" (3.2 mm) ou 1/16" (1.6 mm).
- Raccordements haute pression par olive sertie.
- Tous les raccords sont équipés de vis et d'olives.
- Orifices de détection de fuites sur les raccords.

**Options**

- Raccords en matériaux résistants à la corrosion comme le Hastelloy, titane, etc.
- Trous de fixation.
- Certificats de matériau sur demande.

**Features and advantages**

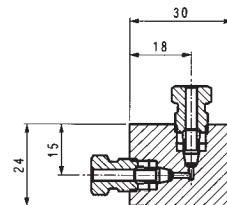
- Body in cold-drawn austenitic stainless steel AISI 316Ti and 316L for high corrosion resistance and wear resistance in the cones.
- Liquid- and gas-tight under extreme working conditions.
- For capillary tubing OD 1/8" (3.2 mm) and OD 1/16" (1.6 mm).
- Compressed ferrule type high-pressure connections.
- All fittings equipped with corresponding ferrules and gland nuts.
- Weep holes on all tubing connections.

**Options**

- Fittings with special inserts, with all wetted parts in corrosion-resistant materials like Hastelloy, titanium, etc.
- Fittings with assembly holes.
- Material certificates on request.

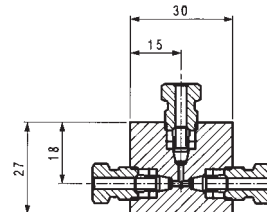
**Winkelstücke – Elbows – Raccords angle droit**

Druck Pressure Pression	Rohr AØ Tubing OD Tube Ø ext.		DN Ø Orifice Pass.	Art.-Nr. Part No. Référence	Stärke Body thk. Epaisseur
bar	inch	mm	mm		mm
1000	1/8	3.2	1.5	620.1312	15
2000	1/16	1.6	1.5	620.1422	15



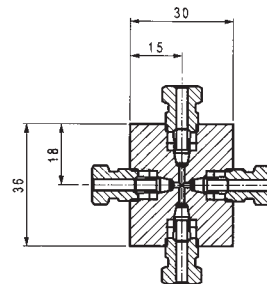
**T-Stücke – Tees – Raccords en T**

Druck Pressure Pression	Rohr AØ Tubing OD Tube Ø ext.		DN Ø Orifice Pass.	Art.-Nr. Part No. Référence	Stärke Body thk. Epaisseur
bar	inch	mm	mm		mm
1000	1/8	3.2	1.5	620.1313	15
2000	1/16	1.6	1.5	620.1423	15



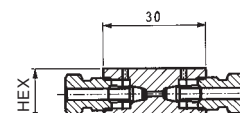
**Kreuzstücke – Crosses – Raccords en croix**

Druck Pressure Pression	Rohr AØ Tubing OD Tube Ø ext.		DN Ø Orifice Pass.	Art.-Nr. Part No. Référence	Stärke Body thk. Epaisseur
bar	inch	mm	mm		mm
1000	1/8	3.2	1.5	620.1314	15
2000	1/16	1.6	1.5	620.1424	15



**Verbindungsstücke – Unions – Raccords droits**

Druck Pressure Pression	Rohr AØ Tubing OD Tube Ø ext.		DN Ø Orifice Pass.	Art.-Nr. Part No. Référence	HEX
bar	inch	mm	mm		mm
1000	1/8	3.2	1.5	620.1310	14
2000	1/16	1.6	1.5	620.1420	14



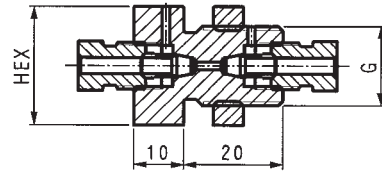
**Laborfittings LHP – Laboratory fittings LHP – Raccords de laboratoire LHP**

Werkstoffe: 1.4571 / 1.4435 Materials: AISI 316Ti/316L

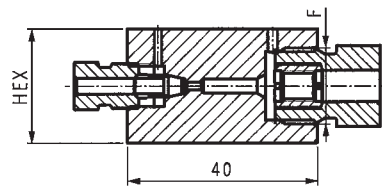
2000 bar 29 000 PSI

**Schottverschraubungen – Bulkhead couplings – Raccords passe-cloison**

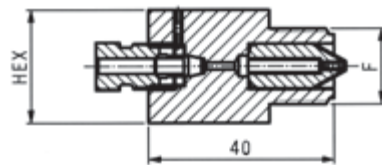
Druck Pressure Pression	Rohr AØ Tubing OD Tube Ø ext.	DN Ø Orifice Pass.	Art.-Nr. Part No. Référence	HEX	G
bar	inch mm	mm		mm	
1000	1/8 3.2	1.5	620.1311	24	M16x1.5
2000	1/16 1.6	1.5	620.1421	24	M16x1.5

**Übergangsstücke – Adapters – Adaptateurs**

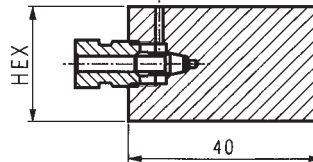
Druck Pressure Pression	Rohr AØ Tubing OD Tube Ø ext.	DN Ø Orifice Pass.	F	Art.-Nr. Part No. Référence	HEX
bar	inch mm	mm			mm
1000	1/8 3.2	1.5	1/8HP-M16x1.5	625.2010	24
2000	1/16 1.6	1.5	1/8HP-M16x1.5	625.2020	24
1000	1/8 3.2	1.5	1/4HP-M16x1.5	625.2310	24
2000	1/16 1.6	1.5	1/4HP-M16x1.5	625.2320	24
1000	1/8 3.2	1.5	3/8HP-M20x1.5	625.2210	24
2000	1/16 1.6	1.5	3/8HP-M20x1.5	625.2220	24

**Übergangsstücke – Adapters – Adaptateurs**

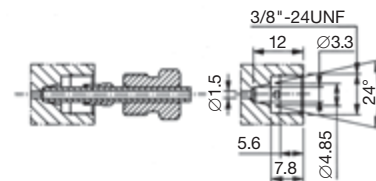
Druck Pressure Pression	Rohr AØ Tubing OD Tube Ø ext.	DN Ø Orifice Pass.	F	Art.-Nr. Part No. Référence	HEX
bar	inch mm	mm			mm
1000	1/8 3.2	1.5	1/8HP-M16x1.5	625.2011	24
2000	1/16 1.6	1.5	1/8HP-M16x1.5	625.2021	24
1000	1/8 3.2	1.5	1/4HP-M16x1.5	625.2311	24
2000	1/16 1.6	1.5	1/4HP-M16x1.5	625.2321	24
1000	1/8 3.2	1.5	3/8HP-M20x1.5	625.2211	24
2000	1/16 1.6	1.5	3/8HP-M20x1.5	625.2221	24

**Blanks**

Druck Pressure Pression	Rohr AØ Tubing OD Tube Ø ext.	DN Ø Orifice Pass.	Art.-Nr. Part No. Référence	HEX
bar	inch mm	mm		mm
1000	1/8 3.2	1.5	620.2010	24
2000	1/16 1.6	1.5	620.2020	24

**LHP-Verschraubungen – LHP connectors – Raccordement LHP**

Hochdruckrohr Capillary tubing Tube capillaire	Druckschraube Gland nut Vis de serrage	Klemmring Ferrule Olive	Stopfen Plug Bouchon
inch mm	Art.-Nr. Part No. Référence	Art.-Nr. Part No. Référence	Art.-Nr. Part No. Référence
1/8 3.2	620.0110	620.0120	620.0130
1/16 1.6	620.0210	620.0220	620.0230

**Erstmontage**

Bitte unbedingt Anschlussvorschrift  
**OR 03.01** beachten!

Sollte diese unserer Lieferung nicht bei-  
liegen, bitte anfordern.

Wir empfehlen die Verwendung eines  
**Vorformwerkzeugs Art.-Nr. 770.9038.**

**Montage initial**

Impérativement respectez la directive  
de montage **OR 03.01**!

En cas de non-réception veuillez la  
demander s'il vous plaît.

Nous recommandons l'usage d'un **outil  
de préformage numéro d'article 770.9038.**

**Initial assembly**

It is imperative to follow the assembly  
instructions **OR 03.01**!

Should this assembly instruction not have  
been part of the delivery please ask for it.

We recommend the use of a **pre-forming  
tool Part No. 770.9038.**